

[SMARTGUARD v5.5.2.0 INSTALLATION GUIDE]

Installation Steps:

1. Execute Setup.exe for SmartGuard v5.5.2.0
2. Continue the step-by-step installation guide
3. Upon completion of installation **DO NOT** run the software yet.
4. Go to the UPDATE folder
5. Copy and replace the file "**SMARTGUARDV5.EXE**" to the program folder you have just install. (default "C:\Program Files\CASS TECH\SmartGuardv5\")
6. Go to Control Panel > BDE
7. Select Configuration > System > INIT
8. Edit MaxiFileHandles value to 1500. Refer Figure 1.0 below.
9. Select Object Menu > Apply to save settings.
10. Quit BDE Administrator program.
11. Launch the SmartGuard Application.

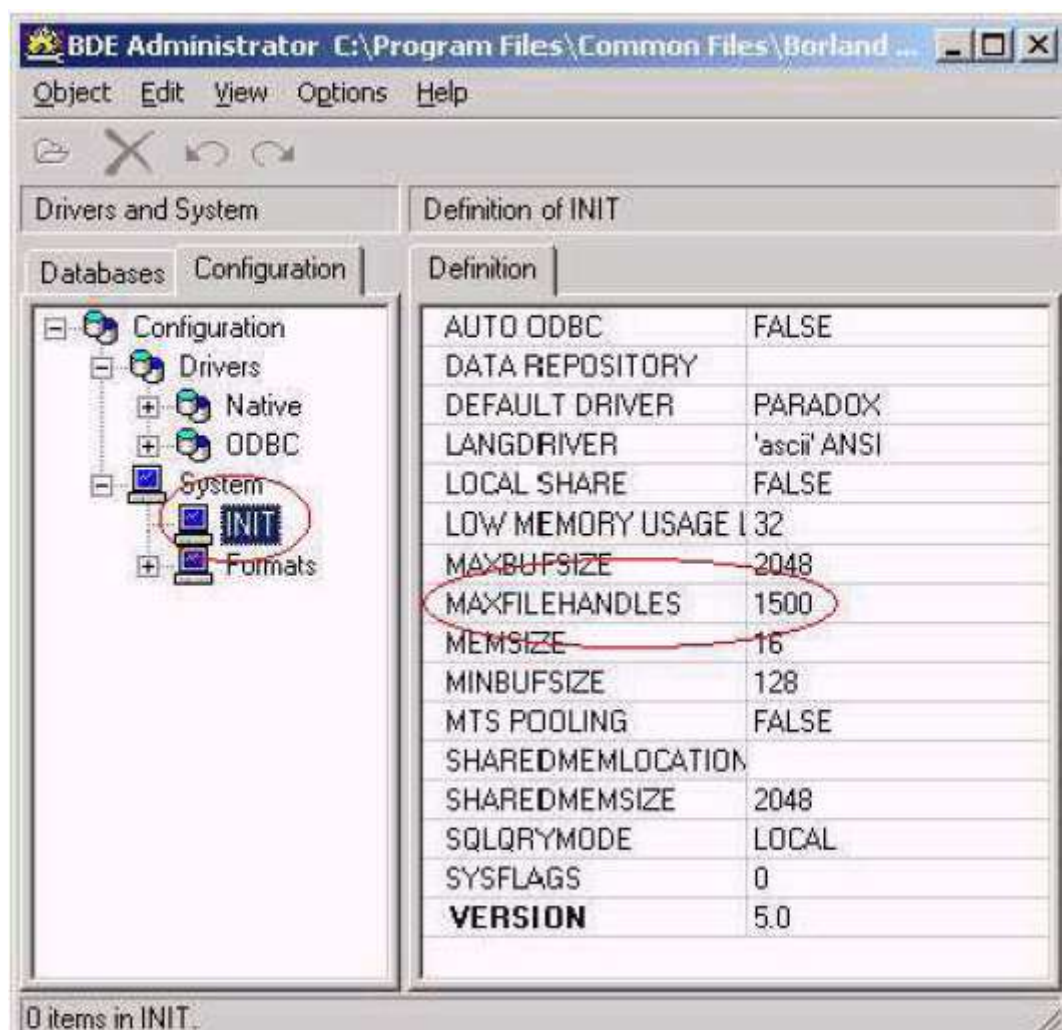


Figure 1.0